



MUSIC HALL CENTER FOR THE PERFORMING ARTS

Technical Package

The background image shows the grand, ornate interior of the Music Hall Center for the Performing Arts. It features a large, carpeted staircase with a dark railing, flanked by classical columns and decorative architectural elements. The lighting is warm and dramatic, highlighting the intricate details of the space.

MUSIC HALL CENTER FOR THE PERFORMING ARTS IS A
MAGNIFICENT, FULLY RESTORED 1928 HISTORIC THEATRE
SEATING 1701 WITH OUTDOOR AMPHITHEATER AND FOUR
UNIQUE LOUNGE AREAS.

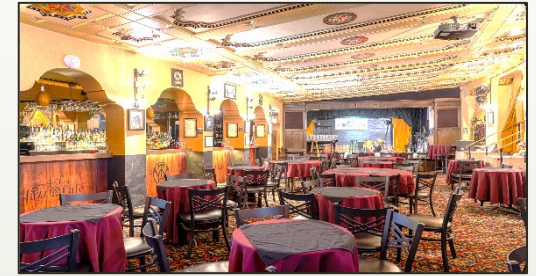
MUSIC HALL PLAYS HOST TO A VARIETY
OF THEATRICAL AND NON-THEATRICAL EVENTS,
INCLUDING CORPORATE ANNUAL MEETINGS,
PARTIES, RECEPTIONS, PHOTO, MOVIE & TV
LOCATION SHOOTS, BENEFITS, AND FUNDRAISERS.

MUSIC HALL IS KNOWN AS
“THE PEOPLE’S THEATER” AND WE CAN HELP YOU
WITH ALL OF YOUR EVENT NEEDS.

WE THANK YOU FOR YOUR CONSIDERATION AND
LOOK FORWARD TO ASSISTING YOU.



3 FIFTY ROOFTOP TERRACE



ARETHA'S JAZZ CAFE



MAIN HALL



ARCHIVE LOUNGE



BASSETT VIP LOUNGE



SELMA TRUSTEE LOUNGE

MUSIC HALL CENTER FOR THE PERFORMING ARTS — Rental Venues



MAIN HALL

Live Performance |
Special Events

MAIN HALL DINNER AND PARTIES

\$6,500

Dinner on Stage Capacity

200 Guests

Dinner on Stage Capacity
with Platform Extension

350 Guests

Platform Extension

\$19,500



PERFORMANCE SEATING CAPACITY: 1,701 SEATS

Seating Breakout:

Orchestra Pit: 30 seats

Main Floor: 747

Opera Boxes: 12 (6 each)

Mezzanine: 576

Balcony: 336

Stage Dimensions:

Wall to Wall.....44' deep x 80' wide

Proscenium opening.....41' wide x 30' tall

Grid height..... 80'

2 sets of Loading doors.....8' wide x 9'6" tall

located Upstage left and right @ stage level

Stage Height above main floor...30"

Additional services:

Drapery: 5 sets of legs and borders (black), 3 full stage black drops

Grid Pipes: 53 counterweight sets @ 700# ea, 63' long

Electrical: 224 DMX dimmers @ 3.6K each (stage pin connector)

House multi cables can be placed on any counterweight set

ETC Express 72/144 Computerized lighting console

Full F.O.H. sound system

Units: Balcony rail: (16) -19 degree Source 4 profiles (35 circuits to stage right)

Box L & R: (8) -19 degree Source 4 profiles each (8 circuits to stage right)

Stage: (32) 8" 1k Fresnel's, (16) -25 degree Source 4 profiles, (8) 10' foot side booms with (3) 25 & 36 degree Source 4 profiles each

Power: 3 - 400 Amp 3 phase panels located up right

1- 200 amp Iso. down Left

Piano: 8' Baldwin Grand Piano ebonized

STAGE & EQUIPMENT

Stage Floor: Tongue and groove oak covered plywood. Limited screwing and lagging allowed with approval.

Stage: 80' wide x 44' deep (3,520 sq. ft.)

See plans for actual shape and details. The entire stage floor can be configured in traps

Proscenium: 30' high x 40'. 6" wide

Orchestra Pit: Ample space for 30 musicians

Ballet Barres: (5) 12'

Rigging & Fly System

Counterweight System: 53 line-sets (63' long), plus one stage left and right tab set

Line travel: 80 ft.

Arbor capacity 1,900 lbs. including batten weight

Lock Rails located SL on fly loft level (3rd floor)

Six lift lines per set.

Additional hang points located down stage of plaster line.

Gridiron

80 ft. above stage level. Grid surface is structural steel grating

STAGE EQUIPMENT CONTINUED

House Curtain

Burgundy velour

Guillotine only. Center split for paging.

Counterweight hand set operates from stage left

Stage Draperies

All draperies, other than grand drape require additional rental fees.

(1) Black scrim

(1) White plastic rear projection screen

(2) White cycroramas

Black Velour

5–10' wide x 30' high pair of legs

5–60' wide x 10' high borders

1–60' wide x 30' high Black Out curtains

Gold Velour

5–10' wide x 30' high pair of legs

5–60' wide x 10' high borders

Storage Space

Storage of empty boxes is limited to stage and green room. Consult with the Technical Director to discuss individual needs.

Lighting

All lighting equipment other than basic power requires additional rental fees.

Power

Three 400A, 3ph Company switches USL

One 200A, 3ph isolated ground switch for sound (SL)

Control

ETC Express 72/144 is currently housed back stage Left.

Normally used FOH Center at the rear of the main orchestra level

Dimming

180 dimmers are located on Stage Left 2nd floor above control area.

Additional 96 dimmers located stage left and stage right

Instrument Inventory

- (7) Far cyc 3 channel units
 - (16) 750w Par wide flood
 - (26) 19° ETC Source 4 ellipsoidal (Front-of-House)
 - (19) 26° ETC Source 4 ellipsoidal
 - (18) 36° ETC Source 4 ellipsoidal
 - (1) 50° ETC Source 4 ellipsoidal
 - (32) 8" 1k W Fresnel
 - (2) Chauvet Q-Spot 575 movers
- Additional Lekos are dedicated FOH for curtain warmers

Miscellaneous Cable

- 8 Boom Bases
- B size Template holders
- 6 Ladders

Follow Spots

- 3 – Super troopers, 208v units

Sound & Video

FOH Console: MIDAS 32 channel digital sound desk

Outboard

- (2) DbX 231 (2 Ch. 31 Band 1/3rd Octave EQ)
- (1) DbX 166 XL (2 Ch. Compressor/ Limitor)

Speakers

- Speakers Bose F-1 812 line array system
- 2 cabinets per side
- 2 subs built in to the walls of the theatre
- 1 center cluster
- (96db out of the speaker with little to no drop off at the back wall)

FOH Sound Console & Snake

- (1) Midas digital 32 channel snake
- (1) analog 32 Channel, 8 Aux Whirlwind Snake:

On stage monitoring

- (1) 16 Channel Makie 1604 mixing console,
- (2) QSC Power Amps and (4) EV floor wedges

Microphones

- (4) Wireless Shure UA844 rack and EW100 Handhelds)
- (3) Wireless Shure SM 58 type microphones
- (3) Shure SM58 / (1) Shure SM57
- (1) Shure C606
- (1) Shure Drum mic package
- (1) AKG D790 / 1 AKG D880
- (2) ATM 450 Condenser
- (1) Sennheiser 365C
- (1) Sterling Piano Mic / 1 Sterling condenser

Playback

CD/DVD/Cassette Players as necessary

Power

200A isolated ground service at SL. Service is 200A

Cable and Accessories

- (1) Genie lift

Paging

A dressing room paging system is installed. Microphone is down stage left. An emergency paging system is located in the storm lobby, front of house at elevator station.

Hearing Impaired System

A Williams hearing impaired system is installed for the auditorium. There are currently 5 headsets available.

Intercom/Communications

Clearcom CS-210 Main Station 2 ch

CS-100 Main Station

501 Belt-Pack

(4) Wired Headsets

HME RW 800 Base Station

(4) Wired BH 800 Belt-Pack

Orchestra Chairs and Stands Available for Rent

40 black padded straight chairs

7 bass stools

18 Manhasset music stands

Dressing Rooms

Stage Level

Principal/Star dressing room with a washroom and shower in each: suitable for 1-2 performers

Basement

Men's and Women's washrooms and showers

2 star dressing rooms

Three Chorus dressing rooms suitable for up to 12 performers each

Green Room Lounge: 750 sq. ft.

Second, Third and Fourth Level

Room 1: 60 sq. ft. with washroom attached: suitable for 2 performers

Room 2: 60 sq. ft. with washroom attached: suitable for 2 performers

Room 3: 60 sq. ft. with washroom attached: suitable for 2 performers

Room 4: 60 sq. ft. with washroom attached: suitable for 2 performers

Additional AUDIO SYSTEM and LIGHTING/ FOH – for special rent

DAS Audio

11 boxes PER side hang as follows

2 pcs LX118ca networked subwoofers (internal 2400-watt peak Powersoft amps)

8 pcs Aero 20A networked line array boxes (internal 800+400-watt Powersoft amps)

1 pcs Aero 20a as above, 120-degree model

(Chain motors CM Loadstar/PRG 1 ton)

FRONT FILLS

4 UNITS Aero 20a / 120 degree networked

SUBWOOFERS

4 ground stacked DAS LX218ca

PROCESSOR

Xta OEM/ DAS 4800 (4 in/ 8 out) set up L/R/sub/front fill (laptop)

Options/ Additional ground stack subwoofers, for FOH/drum sub/ side fill

Consoles

Avid Profile with 4 dsp/ waves/ 2 stage racks available

Yamaha PM5D

Monitors:

12 pcs db technologies DVX DM15 TH

4 pcs db technologies DVX DM12 TH

LIGHTING

Lighting is to complement a full pre-existing fixed house conventional grid

Console BOARD:

GrandMA2 on PC command wing

(Optional HOG 4 Hedgehog)

8 pcs Martin Viper Profile

Option: various moving head wash, etc

Hazers

UltraTech Radiance

Reel FX DF-50

Power:

3 phase Lex Products hub feeding satellite boxes via 50 amp
4 wire California twists

3 Phase NuTech UL listed

Any requested risers are manufactured by Stage right

Air Supply – 2021 - showing supplemental audio and lighting package



Box Office

Music Hall Center has two internet options available to purchase tickets. Tickets are available on www.Musichall.org and www.Ticketmaster.com. Box Office hours are Monday through Friday from 10:00AM to 6:00PM. The Box Office is also open two hours prior to each performance and until intermission on performance nights. Please contact Cindy Morgan at 313-887-8501 for specific information.

Access

Accessible seating is available in the orchestra level of the theatre. Patrons requiring special assistance or seat removal should inform the Box Office prior to purchasing tickets.

Posters and Displays

Posters may be created for your event. There are four frames in front of Music Hall. The window cases accept posters 36" by 66". Easels are also available. They are adjustable and accommodate most sizes. We traditionally use 24" by 36" posters.

Stage Labor

Music Hall operates under agreements with the International Alliance of Theatrical Stage Employees (IATSE), Locals #38 and #786. All stage work connected with a production will be covered under the terms of that agreement. Stagehands will be used for all work on temporary platforms installed in the auditorium of the theatre as well as the stage.

Policies

Music Hall is a non-smoking environment.

Caterers/Special Event Rentals

Renters may use any outside caterer and event rentals companies. If needed, Music Hall can provide a list of preferred vendors.

Loading Dock

Dock is located on the west "alley side" of the building and will accommodate trucks higher or lower than standard dock height. An aluminum walk ramp (capacity: 1,000 lbs.) is available for drop frame trailers. The House does not provide forklifts.

Truck Parking

The loading dock alley will accommodate two 53' trailers, back to back by way of a platform. The Brush side of the building can also accommodate an additional two 53' trailers in the same fashion for short periods of time. When parking trucks on the street, it is recommended that drivers remain with the tractors. Long-term trailer accommodations can be made upon request.

Video

Music Hall has video equipment in-house to accomplish a number of specific tasks. A balcony rail mounted camera feeds the stage manager's console and a number of backstage and lobby monitors with a show program feed.


Wardrobe

300 sq. ft. wardrobe room at basement level. 3 Washers, 2 Dryers Rolling wardrobe racks available upon request

*not to scale
 *seperate patch sheet available

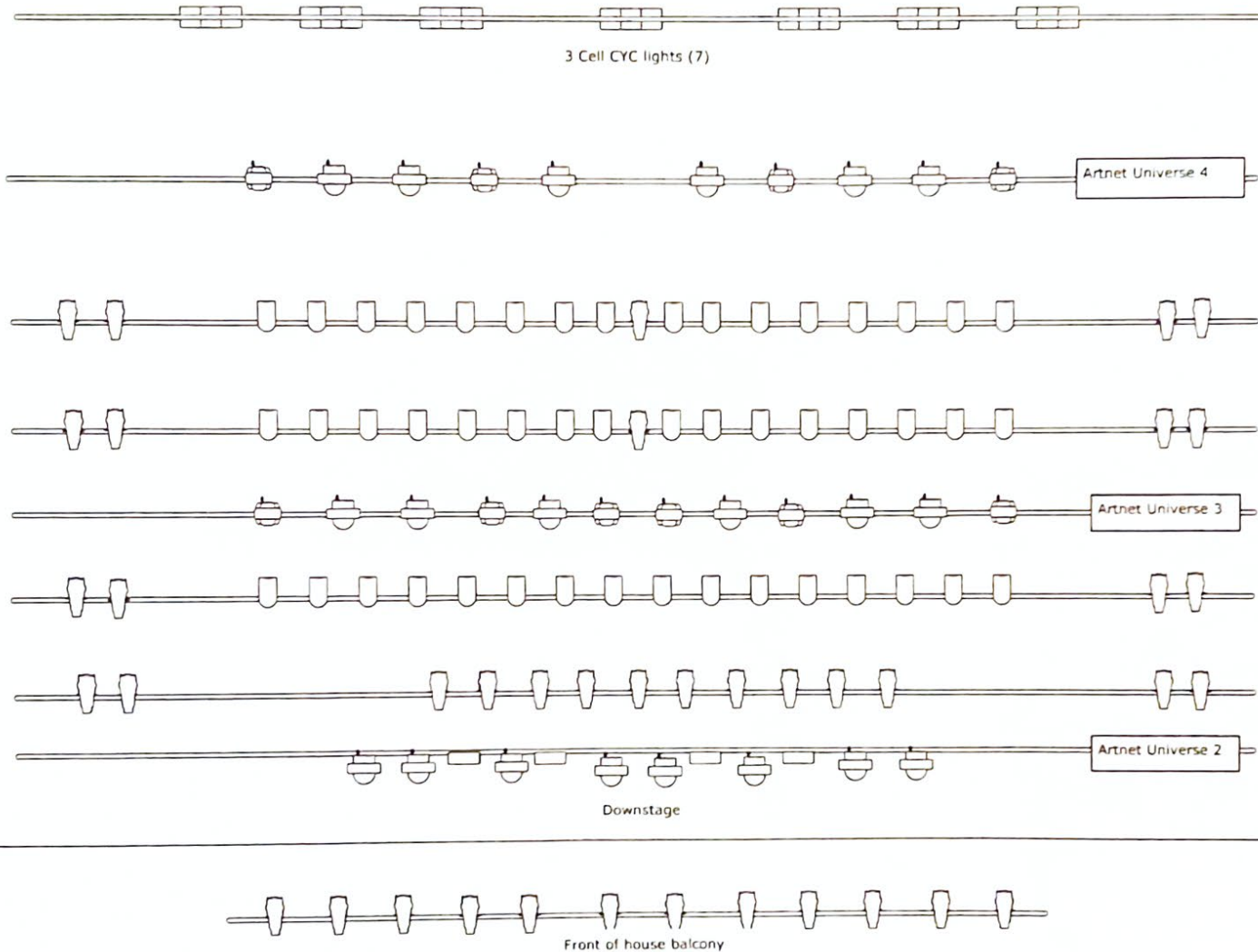
Detroit Music Hall
 |
 |

Technical Director/Union Steward: Cody Cohoon
 Lighting Designer/Union Electrician: Warren C Wilson





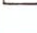
Project Music Hall Center for the Performing Arts	Project location Detroit, MI	Project date 02/02/2025	Drawing author Warren C. Wilson	Drawing version Capture Student
Lighting Director/Head Electrician Warren "Cam" Wilson	This plot is meant to serve as a reference to the normal house lighting hang. Please contact venue TD or LD for exact dimensions and spacing if needed. Plot is subject to minor changes.			
Technical director/Head Carp/Union Steward Cody Cohoon	Overhead dimmers: 1-96 (universe 1) Front of House balcony: 100-120 (universe 1) Artnet 8 Port Node ip: 10.0.10.1 Subnet Mask: 255.0.0.0 House consoles: ETC Express or Road HOG4			

400 amp company switch 3 phase USR: OPEN

400 amp company switch 3 phase USL for moving light distro.



Symbol key

-  ETC Par MFL (48)
-  Source Four Zoom 19"-50" (27)
-  Chauvet Q-Wash 419Z LED Personality 2 (20)
-  Mac Viper Extended (10)
-  Martin Rush Blinder (4)

200 AMP 3 phase company switch DSL for House Audio PA and ground power. Normally plugged into LEX 200 amp power Pagoda then distributed via 50 amp California style locking recepticles to edison power boxes with 20 amp breakers.

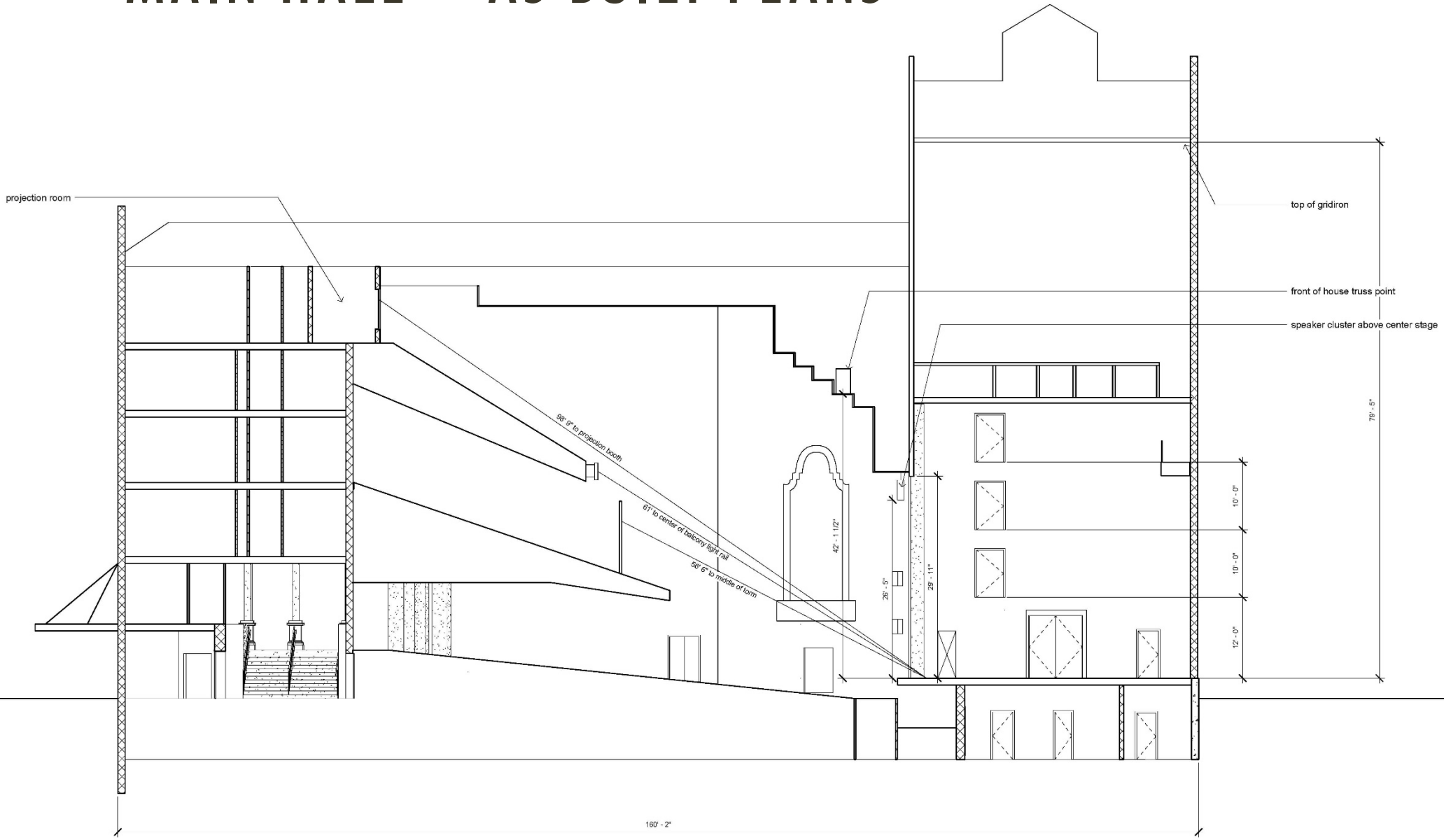
Note: recommended plot, always check inventory on page 23

MUSIC HALL CENTER – LINE SET SCHEDULE

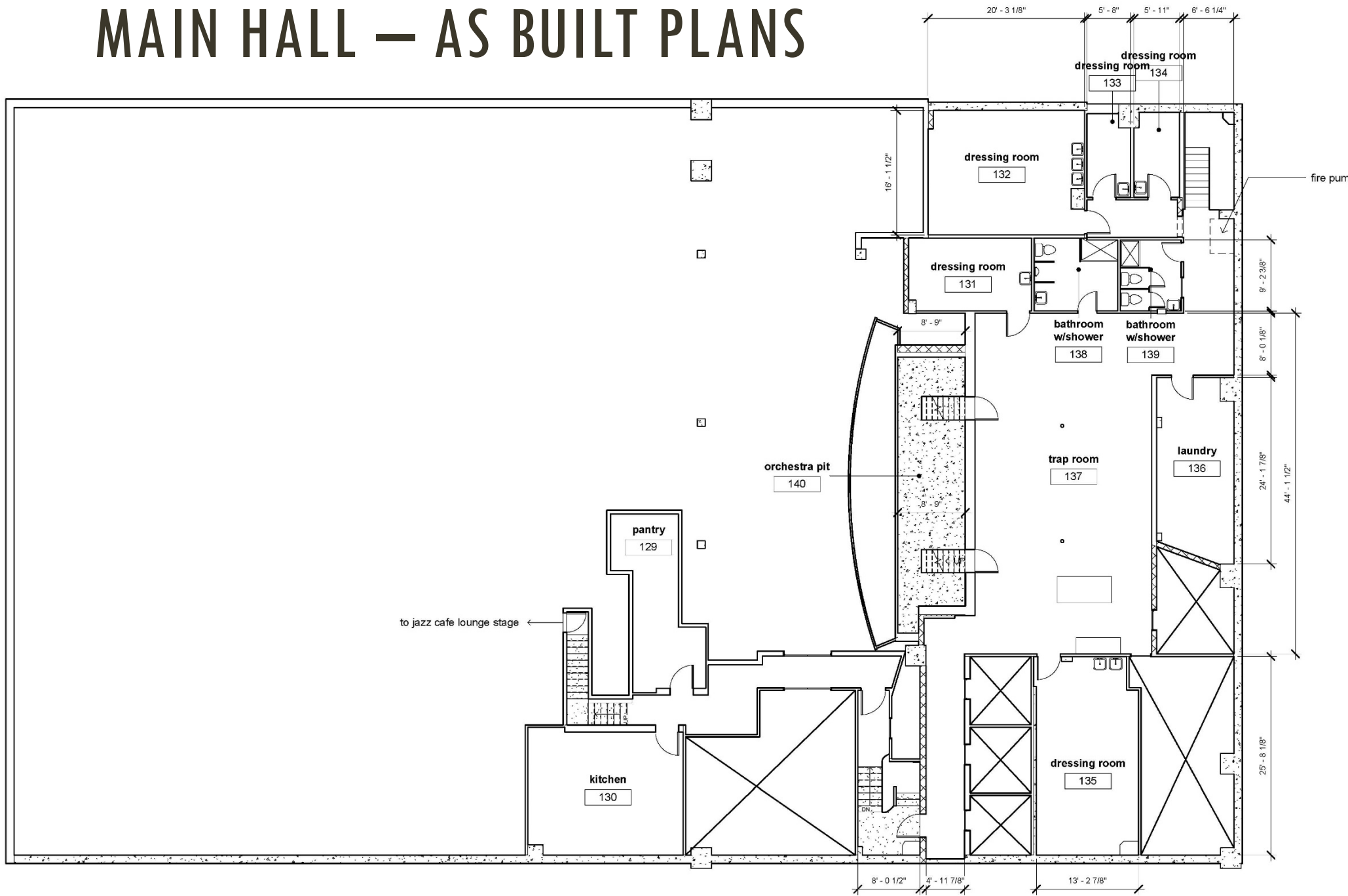
	0'-0"				
	0'-4"	Fire Curtain	27	18'-4"	
	0'-9"	Main Teaser	28	18'-10"	
	1'-3"	Main Curtain	29	19'-4"	
1	2'-2"	Border	30	19'-10"	
2	3'-2"	Legs	31	20'-4"	
3	4'-2"	First Electric	32	20'-10"	Border
4	4'-10"		33	21'-4"	Legs
5	5'-6"		34	21'-10"	Fourth Electric
6	6'-2"		35	22'-4"	
7	6'-8"		36	22'-10"	
8	7'-2"	Border	37	23'-4"	
9	7'-8"	Legs	38	23'-10"	
10	8'-2"		39	24'-4"	
11	8'-8"		40	25'-0"	
12	9'-2"		41	25'-8"	Full Stage Black
13	9'-8"	Second Electric	42	26'-11"	
14	10'-2"		43	27'-7"	
15	10'-8"		44	28'-7"	Fifth Electric
16	11'-4"		45	29'-3"	Legs
17	12'-0"		46	29'-9"	
18	13'-6"		47	30'-3"	
19	14'-2"		48	30'-9"	
20	14'-10"		49	31'-3"	ancient border light
21	15'-4"	Border	50	31'-9"	
22	15'-10"	Legs	51	32'-3"	
23	16'-4"	Third Electric	52	32'-11"	Cyc House Cyc
24	16'-10"		53	33'-11"	Full Stage Black
25	17'-4"				Blackout
26	17'-10"				

Back Wall @ 44 from stage lip
 5 blk legs& borders
 3 full stage blacks

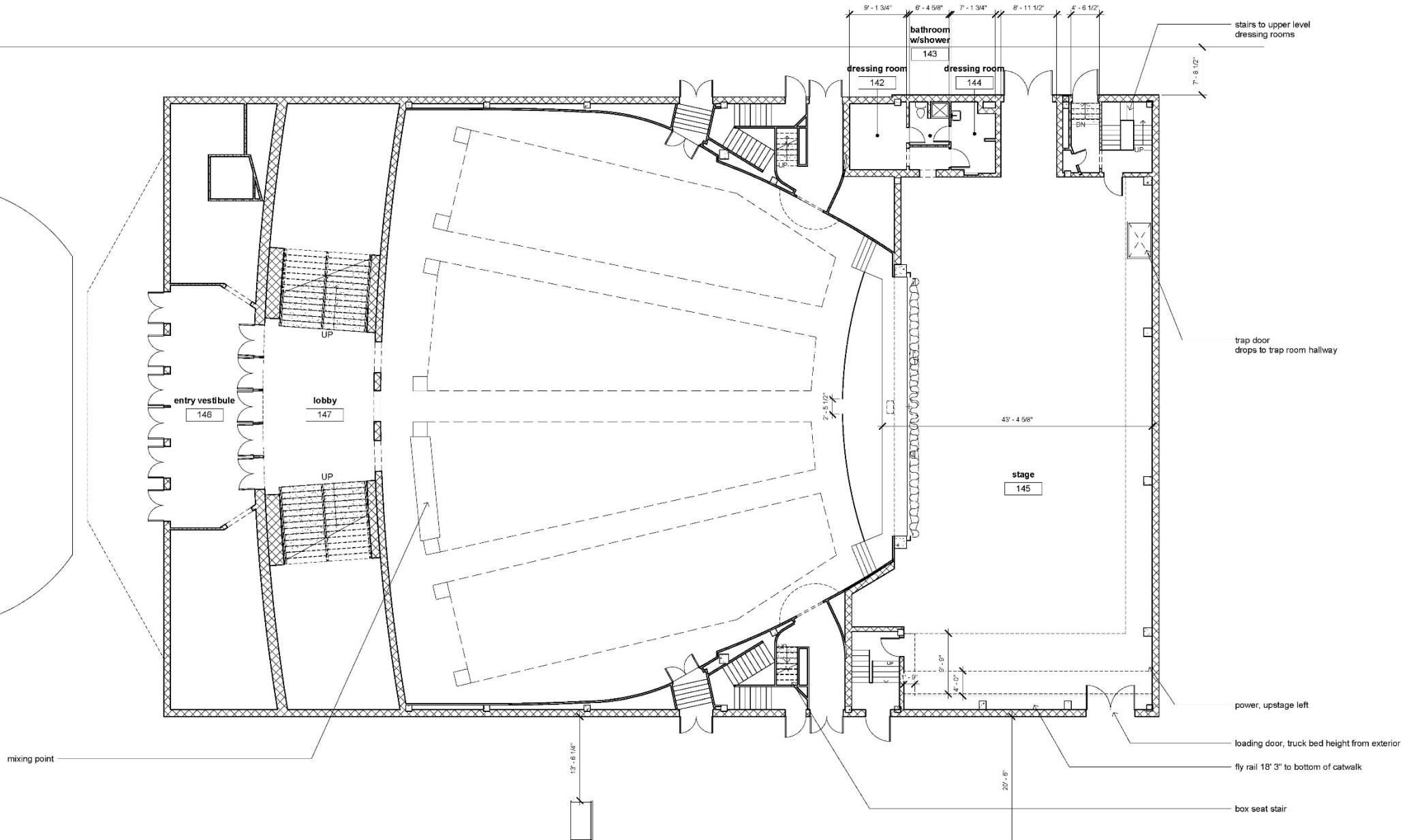
MAIN HALL — AS BUILT PLANS



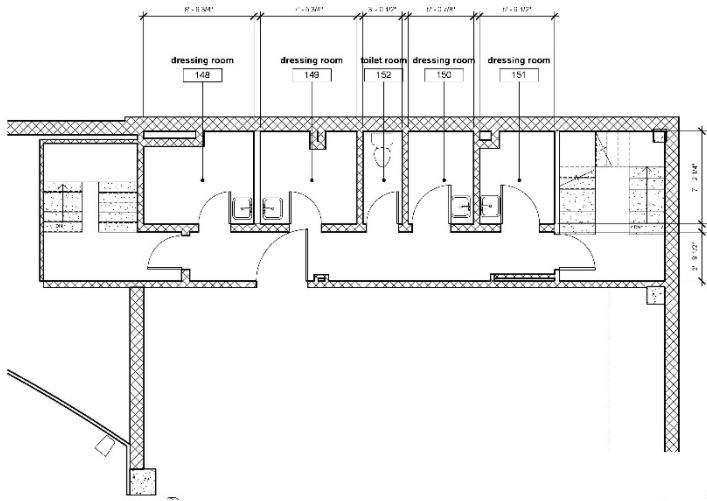
MAIN HALL — AS BUILT PLANS



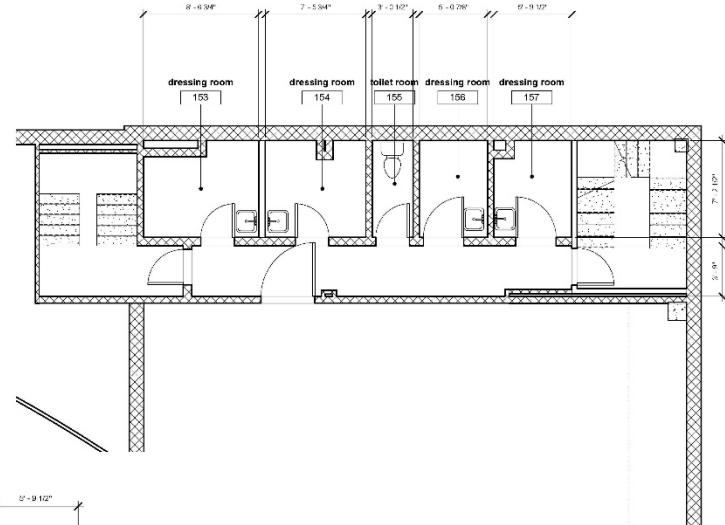
MAIN HALL — AS BUILT PLANS



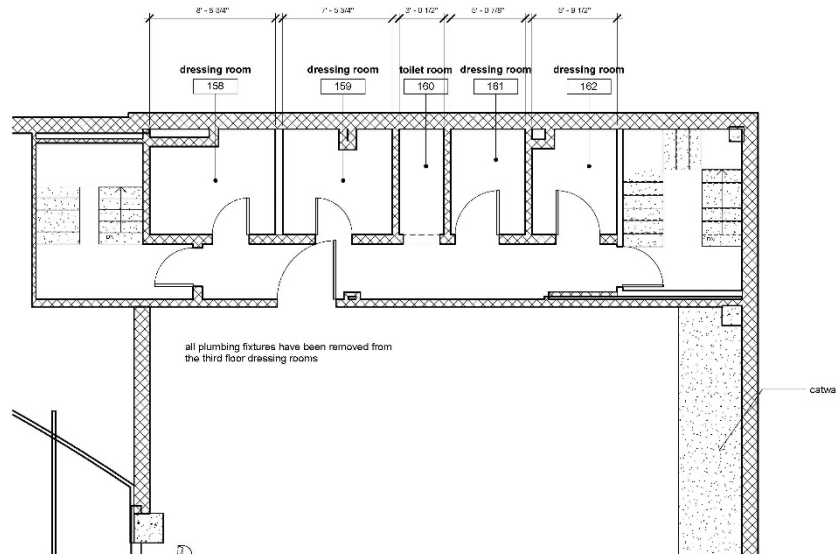
MAIN HALL — AS BUILT PLANS



SECOND FLOOR DRESSING ROOMS



THIRD FLOOR DRESSING ROOMS



FOURTH FLOOR DRESSING ROOMS

